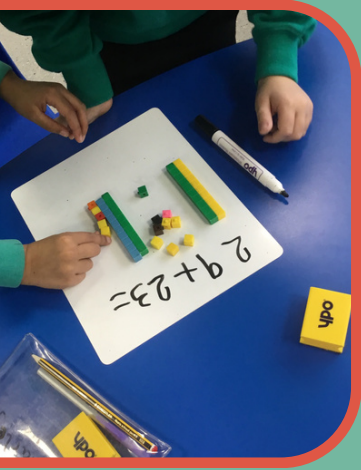


MATHEMATICS



At Sandy Lane Primary School, children will have the opportunity to apply knowledge and understanding of number, place value and the four operations to ALL areas of the maths curriculum. It is essential that children have the experience of solving problems in a wide range of contexts which develop conceptual understanding and resilience through investigations and trial and error activities.

Daily 10

Accurate mental calculation strategies underpin the children's learning in maths. Children complete Daily 10 practice 3 times a week. Flashback 4 will be carried out everyday to support with children's arithmetic skills.

Master of Multiplication

Throughout every day pupils are given the opportunity to practise their multiplication tables for a minimum of ten minutes. Children practise instant recall of multiplication facts and corresponding division facts. Times table rock stars is used throughout school to support with this. When children have met their multiplication and division target, they will become a Master of Multiplication.



Planning

All Teaching staff follow the Sandy Lane year group long term overviews for the year group they are teaching in. This enables full coverage of the curriculum and year group expectations over the course of the academic year. Our long term plans follow the White Rose Maths schemes of learning.

Learn By Questions

LBQ is an online resource that is used in Years 3-6. The children will access their LBQ tasks set by the teacher on an Ipad. The LBQ tasks will be linked to the main teaching in the lesson and follow the maths long term plans in school. The data used from LBQ supports children's progress in maths. To see LBQ in action visit this link -
<https://www.youtube.com/watch?v=YspwdjvCi2M>



prove it



At Sandy Lane, we follow the concrete, pictorial, abstract approach to deliver a maths concept. Prove It activities are the abstract part of this approach and they are carried out at least twice over two weeks. These activities/tasks will enable children to produce high quality work and showcase children's ability to problem solve and reason. They are clearly labelled with the Prove It label.

Prove It activities include the children applying the following skills-

- Noticing
- Wondering – conjecture
- Rules, relationships and reasons
- Making choices
- Justifying decisions

Maths Investigation Days

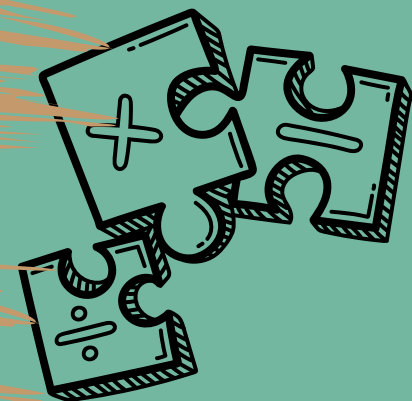
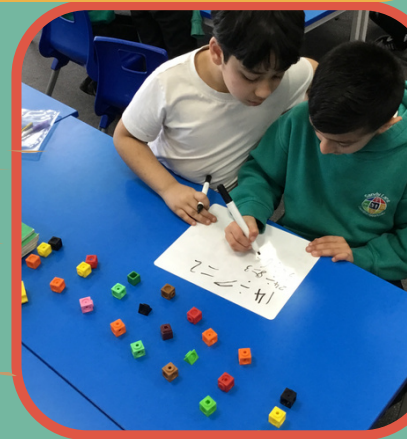
Once a half term, all classes carry out a maths investigation day. The day starts with an open ended problem for each class to investigate the answer to using a range of maths skills. The children work in small groups and practically to solve the problem.

Maths Equipment

Practical resources (concrete) are available and used regularly by all classes to support children's maths learning such as base 10, cubes, bead strings, weighing scales, clocks, sorting rings, number fans, bundling straws, arrow cards, number lines, 100 squares and dice.

At Sandy Lane, our children will have -

- Become fluent, competent and efficient mathematicians
- To have a systematic approach to all areas of maths
- To be able to recall facts and procedures, including the recollection of times tables
- To be able to recognise relationships and make connections in maths
- To be able to clearly explain their reasoning and justify their thought processes
- To have the flexibility to move between different contexts and representations of maths



RESPECT